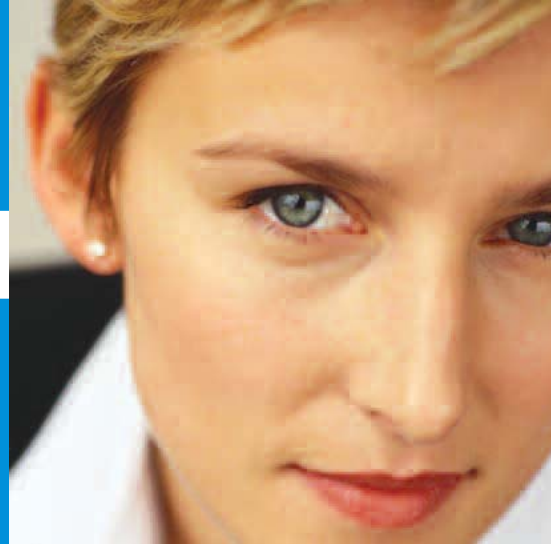


Ricoh Aficio MP 1600/MP 2000
Digital Imaging Systems
Increase productivity with
all-in-one convenience.

RICOH



connected



productive



efficient

Ricoh Aficio MP 1600/MP 2000

What you would ask for if you could customize a complete digital imaging system.

If you want to get more done, you need a system that can do more for you—the RICOH® Aficio® MP 1600/MP 2000. Copy, print, scan and fax all from one conveniently compact and powerful system. Plus, you do not have to spend extra time setting up, maintaining and networking four separate devices.

Create high-quality hardcopies. And save money by sharing and archiving electronic documents. You will also benefit from having remote management and security functions.



Versatile Convenient Productive Connected

Set a New, More Productive Pace

The easiest way to boost productivity is to make common tasks simpler and more convenient. You can do it all with the Ricoh Aficio MP 1600/MP 2000. Packed with user-friendly and time-saving features, the Ricoh Aficio MP 1600/MP 2000 satisfies all of your document production needs—keeping everyone's day moving.

- Speed up production by outputting 16 pages per minute with the Ricoh Aficio MP 1600 and 21 pages per minute with the Ricoh Aficio MP 2000.
- Expand your copying and scanning capabilities with a large, ledger-sized platen. You will also save time and money by keeping more jobs in-house.
- Take advantage of virtually hands-free production by adding an optional 30-sheet Automatic Document Feeder (ADF) to the Ricoh Aficio MP 1600 or Ricoh Aficio MP 2000. Or add an optional 50-sheet Automatic Reversing Document Feeder (ARDF) to the Ricoh Aficio MP 2000 and process two-sided documents.
- Run job after job without interruption thanks to a generous maximum paper capacity up to 1,600 sheets.
- Save paper and filing space with the ability to copy and print two-sided documents with stackless duplexing on the Ricoh Aficio MP 2000.
- Simplify distribution with DeskTopBinder™ Lite. It lets you quickly view thousands of pages of stored documents—even across numerous folders—and easily combine them into a single document.

Boost Your Print Production

Consolidate your printers with rapid speeds and controls that let you perform virtually any printing task. You will also benefit from a generous paper supply of up to 1,600 sheets that most stand-alone printers can't match.

- Eliminate network congestion and print PDFs quickly—without opening an application—using PDF Direct Print.
- Create documents faster than ever. Ricoh's standard intuitive Refined Print Command Stream (RPCS) icon-based print driver lets users apply job settings—from simple to complex—and run jobs with a single mouse click.
- Print documents created with most common business applications thanks to standard PCL5e/6 print drivers or optional genuine Adobe® PostScript® 3™.

Simplify Document Management

While we do not live in a paperless society, you can get a head start with the Ricoh Aficio MP 1600/MP 2000. Advanced scanning offers you resolutions up to 600 dpi and the ability to conveniently convert documents to TIFF or PDF files without the need for additional desktop systems.

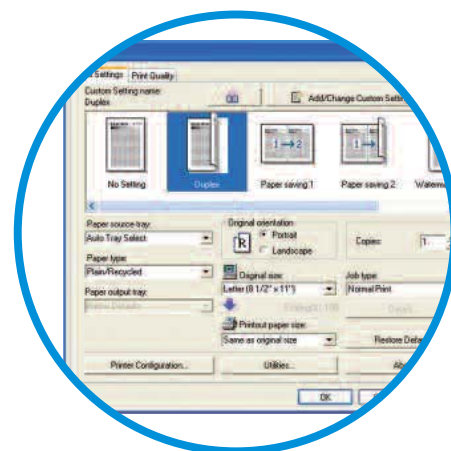
- Save time, postage and overnight delivery charges by scanning hardcopy documents and sending them directly to recipients' e-mail addresses.
- Simplify file sharing and document archiving by scanning documents to network folders.
- Securely share confidential documents in the form of encrypted PDFs, rather than as hardcopies that can be lost in the mail or misplaced.



Instantly send any document at no cost to any network destination through the powerful Ricoh Scan-to technology.



Use Inbound Fax Routing to send fax documents directly to a PC and reduce paper costs.



Ricoh's Refined Print Command Stream (RPCS) is an easy-to-use, icon-based print driver that enables you to apply and save special settings.

CopyPrintScanFax

Fax and Save Time and Money

The Ricoh Aficio MP 1600/MP 2000 comes with a range of faxing options that make it easier than ever to send documents and receive faxes without leaving your desk.

- Fax hardcopies quickly with a Super G3 modem that fires off pages in as little as three seconds per page.
- Save on long-distance and international phone charges and paper costs with Internet Fax, allowing you to send scanned documents directly to e-mail addresses or to Internet-enabled facsimile systems.
- Reduce work interruptions and save paper by using the LAN Fax feature to send faxes directly from your PC.
- Save on long-distance and international phone charges by using IP Fax to send documents to another IP fax machine.
- Reduce paper use by automatically forwarding inbound faxes directly to e-mail addresses or network folders. An e-mail notification alerts you when a fax has arrived.
- Save time and prevent misdials by retrieving fax numbers and e-mail addresses from your corporate address book using the LDAP server.

Seamless Network Integration

Boost productivity and work more efficiently. The Ricoh Aficio MP 1600/MP 2000 offers advanced networking capabilities so people can spend less time walking back and forth to the system—and more time getting their work done.

- Connect the way you want using the standard 10BaseT/100BaseTX Ethernet or USB 2.0 interface.
- Work wirelessly with optional Wireless LAN and Bluetooth™ interfaces.
- Eliminate time-consuming manual meter reading and reporting with Ricoh @Remote Intelligent Management System.
- Empower administrators with Web SmartDeviceMonitor™ and Web Image Monitor™. Both allow users to monitor system status, settings and more from their desktops.

Protect Your Sensitive Data

Whether you work with paper or electronic documents—whether you go wireless or direct connect—you can be confident that all your data is secure.

- Protect sensitive information and prevent unauthorized use by controlling system access with several methods of User Authentication.
- Confidently store frequently used e-mail addresses and fax numbers right on the system. Advanced address book encryption ensures they remain secure.
- Protect printed documents by using Mask Type for Copying to embed messages that appear if a document is copied.



Your Partner in Environmental Solutions

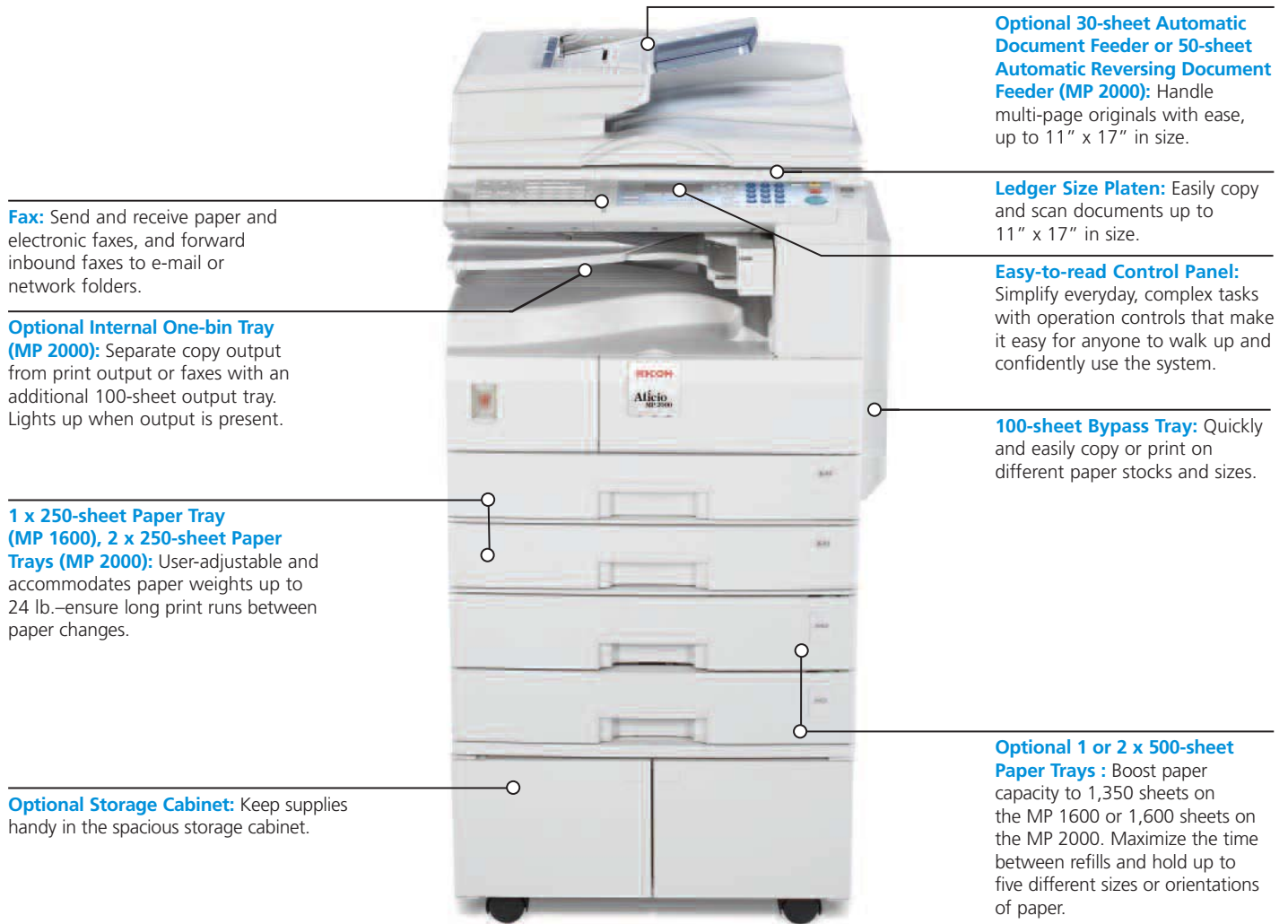
Ricoh continues its long-standing commitment to developing office solutions with environmentally friendly and superior energy- and supply-saving features, without compromising productivity, including:

- Quick Start-Up (QSU) Technology
- Power-saving Sleep Mode
- Duplex and Combine Copy Modes
- Toner Recycling
- Low Noise Levels
- Minimal Ozone Emissions
- Restriction of Hazardous Substances Compliant (RoHS)



Versatile Convenient Productive Connected

Four convenient systems in one.



Multiple configurations for maximum creativity.



MP 1600: Base model with optional 30-sheet ADF, standard 250-sheet Paper Tray and standard 100-sheet Bypass Tray.



MP 1600SPF: Base model with standard copy, print, scan and fax capabilities, optional 30-sheet ADF, standard 1 x 250-sheet and optional 2 x 500-sheet Paper Trays, plus optional Cabinet Stand.



MP 2000: Base model with optional 50-sheet ARDF, standard 2 x 250-sheet Paper Trays, standard 100-sheet Bypass Tray and optional One-bin Tray.



MP 2000SPF: Base model with standard copy, print, scan and fax capabilities, optional 50-sheet ARDF, standard 2 x 250-sheet and optional 2 x 500-sheet Paper Trays, standard One-bin Tray, plus optional Cabinet Stand.

Ricoh Aficio MP 1600/MP 2000

System Specifications

Aficio®

Engine/Copier Specifications

Configuration	Console
Scanning Element	Flatbed with CCD Array Image Sensor
Toner	Dry Process (dual component)
System Memory	16 MB (std./max.)
Document Feeder	Optional 30-sheet ADF (MP 1600/MP 2000) Optional 50-sheet ARDF (MP 2000)
Copy Resolution	600 x 600 dpi
Grayscale	256 Levels
Exposure Adjustment	Manual & Automatic
Quantity Indicator	1-99
Original Type	Sheet/Book
Original Size	Up to 11" x 17"
Copy Size	5.5" x 8.5" to 11" x 17"
Copy Type	Plain Paper, Envelopes, Postcards
Warm-Up Time	26 Seconds
First-Copy Speed	6.5 Seconds
Continuous Copy Speed	16 copies/minute (MP 1600) 21 copies/minute (MP 2000)
Recovery Time (from Auto Off)	Less than 10 seconds
Power Source	120 V/60 Hz
Dimensions (WxDxH)	21.6" x 22.4" x 16.5" (MP 1600) 23.1" x 22.4" x 22" (MP 2000)
Weight	78 lbs. (MP 1600) 103 lbs. (MP 2000)
Standard Paper Capacity	250 Sheets x 1 Tray (MP 1600) 250 Sheets x 2 Trays (MP 2000)
Optional Paper Capacity	100-sheet Bypass Tray 500 Sheets x 1 Tray or 500 Sheets x 2 Trays
Paper Size	5.5" x 8.5" to 11" x 17"
Paper Weight	16 to 24 lb. Bond (Paper Trays) 14 to 43 lb. Bond/90 lb. Index (Bypass Tray) 20 to 24 lb. Bond (Duplex Unit)
Output Tray Capacity	250 Sheets 100-sheet One-bin Tray (Optional for MP 2000)
Reduction Ratios	50%; 65%; 78%; 93%
Enlargement Ratios	121%; 129%; 155%
Zoom	50% to 200% in 1% increments

Copier Features

Auto Paper Selection, Auto Reduce/Enlarge, Auto Start, Auto Tray Switching*, Combine Copy (2 in 1, 4 in 1), Electronic Sort, Image Rotation, Photo Mode, Rotate Sorting*, Series Copy, User Codes (50), User Tools

*Requires optional Paper Bank on the MP 1600.

Printer Specifications (optional)

Print Speed	16 ppm (MP 1600) 21 ppm (MP 2000)
CPU	RM5231 400 MHz
Memory Capacity	384 MB standard
Standard Interfaces	Ethernet 10BaseT/100BaseTX, USB 2.0
Optional Interfaces	IEEE 802.11b Wireless LAN, Bluetooth™, IEEE 1284 Parallel
Network Protocol	TCP/IP; IPX/SPX; AppleTalk; SMB
Network Operating	Windows® 9x/NT4.0/2000/Me/XP/ Server 2003 Macintosh® OS 8.6 or later, Mac® OS X Classic, Mac® OS X Native: v.10.1 or later Novell® NetWare 3.12, 3.2, 4.1, 4.11, 5.0, 5.1, 6, 6.5, UNIX filters for Sun Solaris 2.6/7/8/9/10 HP-UX 10.x/11.x/11iv2, SCO OpenServer 5.0.6 /5.0.7, RedHat Linux 6.x/7.x/8.x/9.x/ Enterprise and IBM AIX V4.3 & 5L Version 5.1/5.2 /5.3, SAP R/3 3.x or later, mySAP ERP2004 or later SmartDeviceMonitor™, Web Image Monitor™, Web SmartDeviceMonitor™, DeskTopBinder™ Lite Standard RPCS™, PCL5e/6 Optional Adobe® PostScript® 3™ 600 x 600 dpi 35 Intellifonts, 10 TrueType Fonts, 1 Bitmap, 13 International Fonts 136 Roman Fonts
Utilities	
Page Description Languages	Optional Adobe® PostScript® 3™
Print Resolution	600 x 600 dpi
Fonts for PCL5e/6	35 Intellifonts, 10 TrueType Fonts, 1 Bitmap, 13 International Fonts 136 Roman Fonts
Fonts for PS3	136 Roman Fonts

Printer Features

Automatic Tray Select, Auto Tray Switching*, Duplex Printing (MP 2000), Envelope Printing, Watermarks

*Requires optional Paper Bank on the MP 1600.

Scanner Specifications (optional)

Scanning Speed	Scan-to-Email/Folder/Network: 43 ipm @ 200 dpi, Letter Size
Scanning Resolution	600 dpi
Grayscale	256 Levels
Scan Area	Up to 11" x 17"
Standard Interfaces	Ethernet 10BaseT/100BaseTX
Optional Interfaces	IEEE 802.11b Wireless LAN
Protocol	TCP/IP
File Formats	TIFF; PDF

Scanner Features

Black & White Scanning, Duplex Scanning (MP 2000), Embedded Scan-to-Email, Image Rotation, Network TWIN Scanning, Scan-to-Folder (SMB/NCP/FTP), ScanRouter Lite

Security Features

User Authentication*, SNMP v3, Mask Type for Copying, Encrypt Address Book*

*Requires Print/Scan Kit or All-in-One Kit.

Fax Specifications (optional)

Circuit	PSTN, PBX
Compatibility	ITU-T G3
Resolution	200 x 100/200/400 dpi
Compression Method	MH, MR, MMR, JBIG
Scanning Speed	30 ppm (Standard/Detail Modes) 16 ppm (Fine Mode)
Modem Speed	33.6Kbps – 2,400 bps w/Auto Fallback
Transmission Speed	G3: 3 seconds/page (w/MMR)*, ** G3: 2 seconds/page (w/JBIG)*, **
Memory	4 MB (320 Sheets*)
Memory Backup	1 hour
Quick Dials	32
Speed Dials	150
Group Dials	10 (max. 100 per group)
ID Code Programming	4 Digits
User Function Key	3 keys

*Based on ITU-Test Chart #1 in standard mode.

**Approximate speed is per page at 33.6Kbps and dependent on optimal line quality. Customer performance may vary by location.

Fax Features

A1 Short Protocol, Authorized Reception, Auto Reduction, Batch Transmission, Battery Backup, Dual Access, Duplex Fax Transmission (MP 2000), Error Correction Mode, Inbound Fax Routing*, IP Fax*, Internet Fax (T.37)*, LAN Fax*, Manual Reception, Page Retransmission, Parallel Memory Transmission, Reception Time Printing, Restricted Access, Send Later, Serial Broadcasting, Substitute Reception

*Requires optional All-in-One Kit

Accessories

DF2000 Automatic Document Feeder	
Original Size	5.5" x 8.5" to 11" x 17"
Original Weight	14 to 28 lb. Bond
Original Capacity	30 Sheets
Dimensions (WxDxH)	21.6" x 18.5" x 3.55"
Weight	15.4 lbs.

DF2010 Automatic Reversing Document Feeder (MP 2000 only)

Original Size	5.5" x 8.5" to 11" x 17"
Original Weight	Simplex Original: 10 to 34 lb. Bond; Duplex Original: 17 to 28 lb. Bond
Original Capacity	50 Sheets
Dimensions (WxDxH)	21.6" x 18.5" x 5.1"
Weight	22.05 lbs.

PS450 Paper Bank*

Paper Capacity	500 Sheets x 2 Trays
Paper Size	5.5" x 8.5" to 11" x 17"
Paper Weight	16 to 28 lb. Bond
Dimensions (WxDxH)	21.6" x 20.5" x 10.6"
Weight	55.1 lbs.

*Configuration with Small Cabinet recommended.

PS460 Paper Bank*

Paper Capacity	500 Sheets x 1 Tray
Paper Size	5.5" x 8.5" to 11" x 17"
Paper Weight	16 to 28 lb. Bond
Dimensions (WxDxH)	21.6" x 20.5" x 5.3"
Weight	26.05 lbs.

*Configuration with Medium Cabinet recommended.

Type PT340 One-Bin Tray (MP 2000 only)

Paper Size	5.5" x 8.5" to 11" x 17"
Paper Weight	16 to 28 lb. Bond
Paper Capacity	100 Sheets
Dimensions (WxDxH)	8.5" x 18.9" x 4.1"
Tray	13.2" x 15.4" x 1.7"
Weight	3.5 lbs.

RICOH
www.ricoh-usa.com

Ricoh Corporation, Five Dedrick Place, West Caldwell, NJ 07006
Ricoh® and the Ricoh Logo are registered trademarks of Ricoh Company, Ltd. Windows® and Windows® 95/98/Me/NT4.0/2000/XP are registered trademarks of Microsoft Corporation. Macintosh®, Mac® OS and AppleTalk® are registered trademarks of Apple Computer, Inc. Adobe® and PostScript® are registered trademarks of Adobe Systems, Inc. PCL® is a registered trademark of Hewlett-Packard Company. RPCS™ is a trademark of Ricoh Company, Ltd. All other trademarks are the property of their respective owners. Print speed may be affected by network, application or PC performance. Specifications and external appearances are subject to change without notice. Products are shown with optional features.

CA-0590

Printed in U.S.A. on recycled paper because Ricoh cares.

